

JAGDSCHLOSS PLATTE

EXCLUSIVE - INDIVIDUAL - VERSATILE

SPECIAL LOCATION

WITH A VIEW OF THE ENTIRE CITY



Jagdschloss Platte

An der B417

65195 Wiesbaden

Arriving by car

Just ten minutes by car from Wiesbaden city centre, Jagdschloss Platte is located on the B417 road in the direction of Limburg/Taunusstein. The Platter Straße heading out of town joins the B417 directly after the "Wiesbaden" exit sign. The B417 leads directly to Jagdschloss Platte after approx. three kilometres. There is a sign on the right at the top of the hill, just before the exit. Sufficient parking spaces (free) are signposted in front of Jagdschloss Platte.

Arriving by public transport

The 270 and 271 buses depart hourly every day.



EVENT LOCATION IN THE GREENERY

ABOVE THE ROOFTOPS OF WIESBADEN



On the Taunus hillside called "Platte" lies the Jagdschloss Platte, one of the most beautiful historic locations in the region. The Platte, the 500-metre-high peak of the Wiesbaden Hochtaunus area is the ideal location for those seeking relaxation, hikers, cyclists and for tobogganists and skiers in winter. The city centre of the Hessian capital is just a few minutes away by car. Up to 400 free parking spaces are available to the public.

SETTING FOR THE SOCIAL SCENE

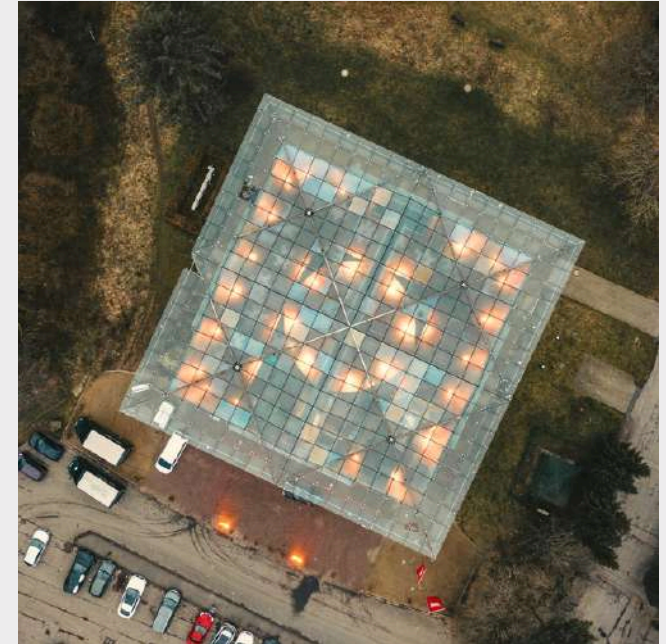
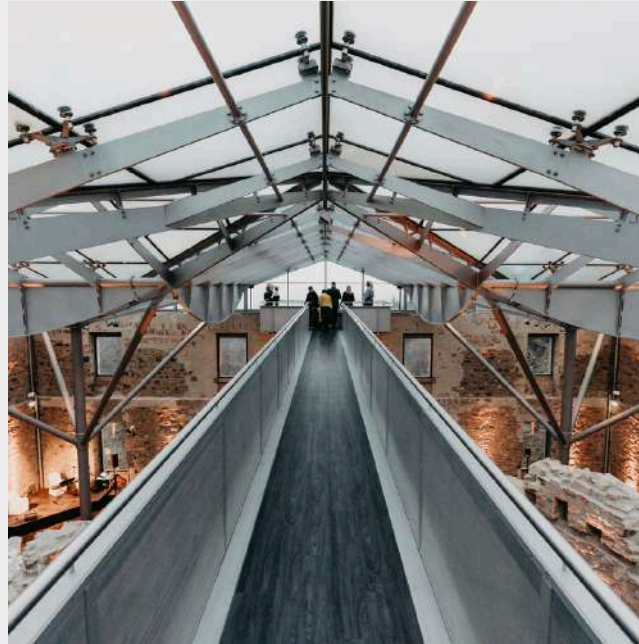
SINCE 1826



The afforested hills above Wiesbaden with their unobstructed view of the Rhine Valley were already the royal hunting ground and preferred abode of sovereigns and rulers as far back as the 18th century. Jagdschloss Platte was built on behalf of Duke Willhelm of Nassau in the 19th century. The magnitude of the hunting ground and stately architecture soon meant the castle was the setting for the social scene.

HISTORIC CASTLE RUIN

WITH MODERN INTERPRETATION



The building was completely destroyed during an air raid at the end of the Second World War. It was restored and modernized in compliance with the preservation of historic buildings and monuments. The historic character of the ruin was preserved and enhanced with new, modern elements such as a glass roof and a viewing platform with a view stretching up to 85 km away.

The combination of preserved architecture and new elements underline the unique character of Jagdschloss Platte.

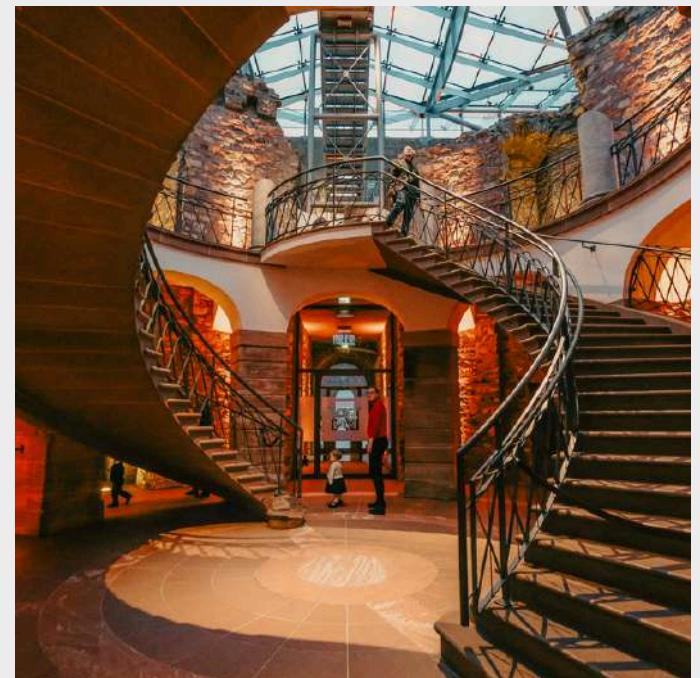


EXCLUSIVE ATMOSPHERE

WITH PLENTY OF SCOPE FOR CREATIVE DESIGN

Ground floor and upper floor provide a total of 660m² of space for events with up to 600 persons. The ground floor with 280m² of event space is particularly suitable as a lounge and party area or for receptions for your guests.

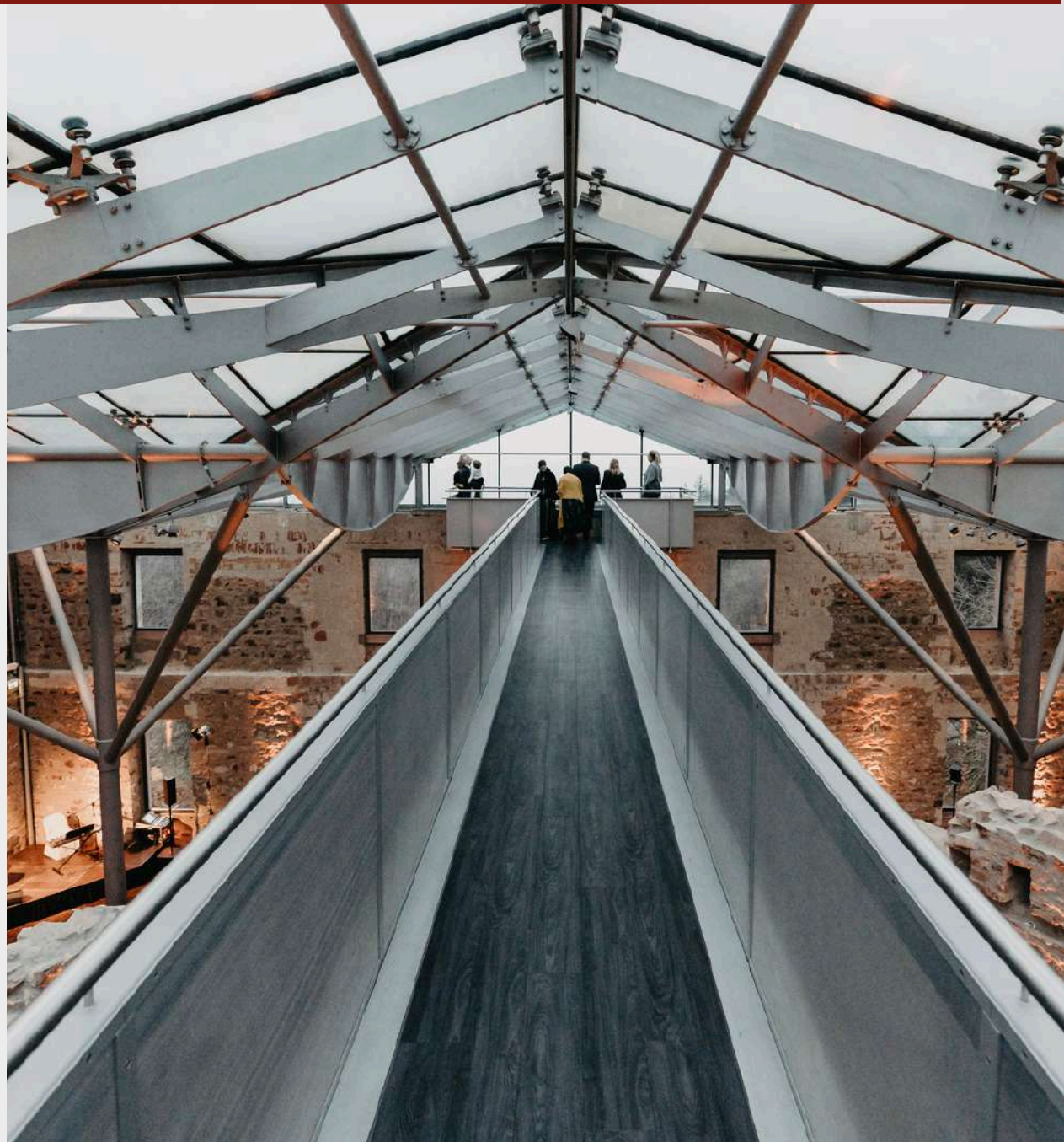
Up to 300 banquet guests can be accommodated on some 380m² of event space on the upper floor.



GLASS ROOF

WITH A VIEWING PLATFORM

Part of the special appeal of the upper floor is the visual opening of the room with a glass roof as well as the view of the densely forested surroundings from the large windows and viewing platform.



OUTDOOR AREA

FOR A RECEPTION



Greet your guests with a refreshing drink and a heartfelt welcome speech. Especially in the warm months, the green area behind the house is suitable for a summer reception.



EXCLUSIVITY

FOR YOUR EVENT

Whether for a conference, workshop, exhibition or evening event: the castle is yours exclusively. No parallel events will take place. This means that your event and your guests are centre stage.

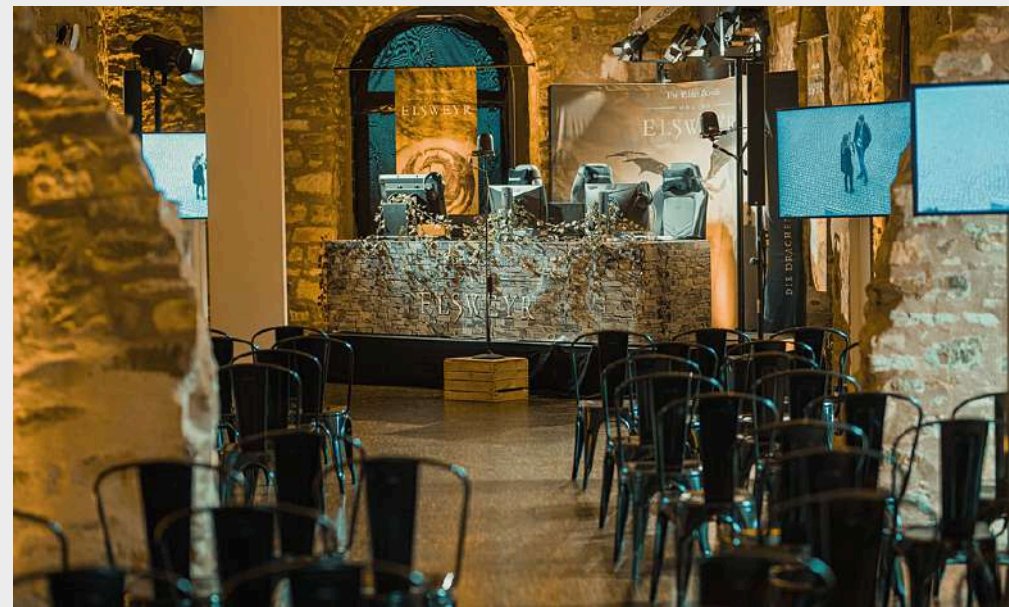
The regular rental period incl. set-up and de-rig is from 08:00 to 06:00 on the morning of the next day. The end of the event is thus scheduled for 03:00. Adjustments can be agreed in advance.



CREATIVE FREEDOM

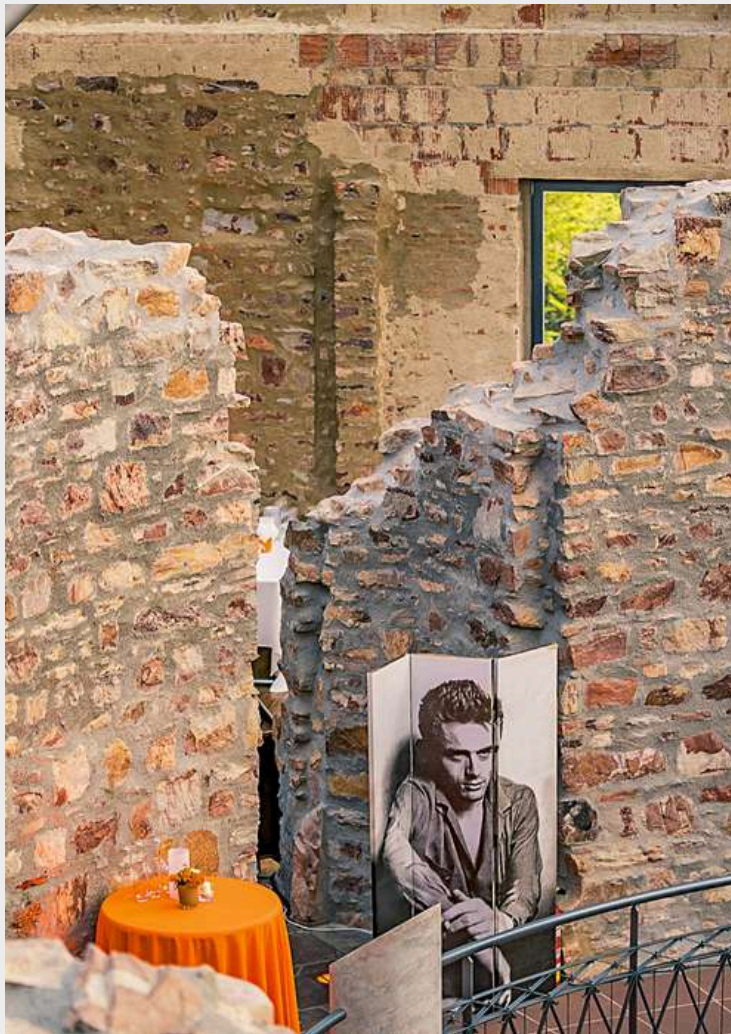
FOR EVERY EVENT

Let your imagination run wild. The building is already impressive without any decoration. With just a few features or lighting elements, you can give the castle a personal touch.



SUPPORT, ADVICE AND SERVICE

CONDITIONS



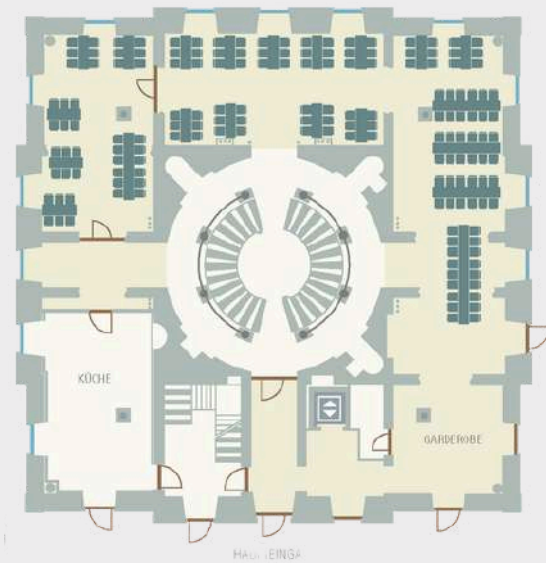
- Max. number of persons
- Rent per day incl. final cleaning
- Security staff*
- Standard electricity & light
- Heating and ventilation
- WLAN

up to 600 persons
5.750,-€ Euro plus VAT.
312,-€ Euro plus VAT.
inclusive
inclusive
on request

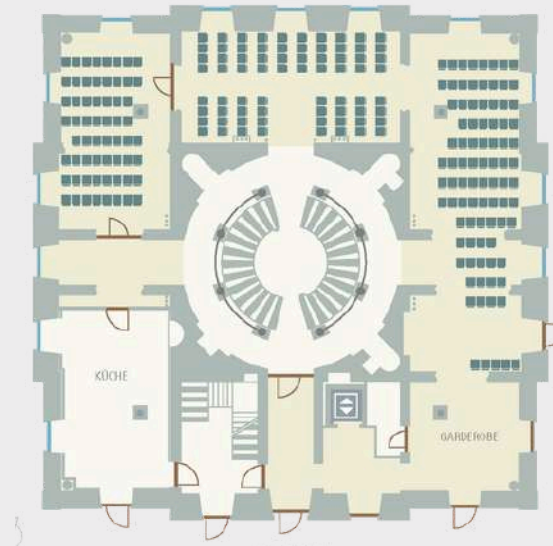
*A security specialist must be appointed by Jagdschloss Platte to supervise your event. The period is usually set at 10 p.m. to 6 a.m. (end of dismantling).

VERSATILE USE OF THE PREMISES

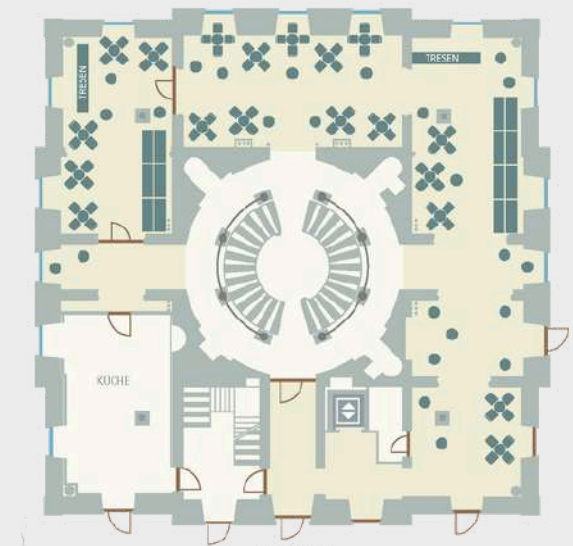
INDIVIDUAL DESIGN ON THE GROUND FLOOR



Seating with square tables



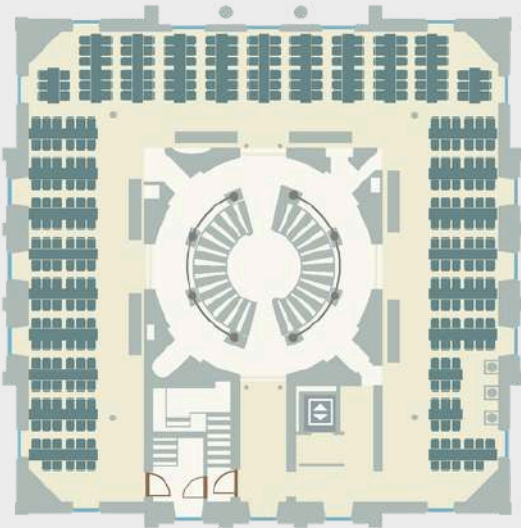
Row seating



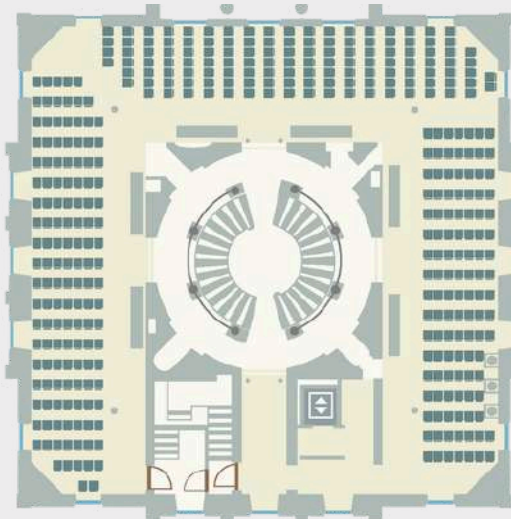
Mixed standing and seated seating

VERSATILE USE OF THE PREMISES

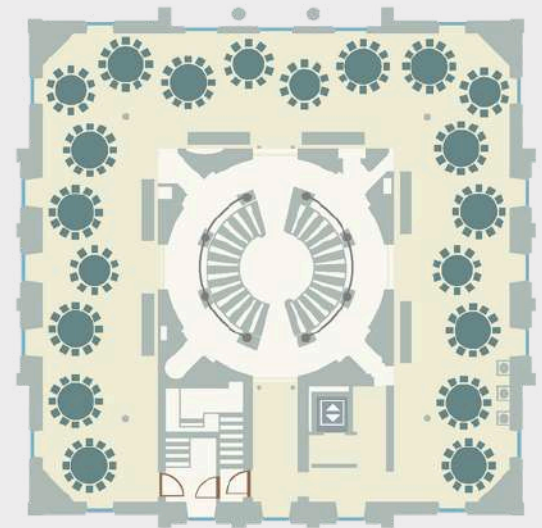
INDIVIDUAL DESIGN ON THE FIRST FLOOR



Seating with square tables



Row seating



Round table seating

OUR CATERING PARTNERS

The caterers listed here have concluded a basic agreement with Jagdschloss Platte and are familiar with the conditions on site. Caterers that are not listed are also permitted after conclusion of a one-day basic agreement with relevant commission clause.



Consortium Gastronomie GmbH
Tel.: +49 611 / 17437 30
E-Mail: diekoeche@consortium.de
Website: www.consortium-gastronomie.de

Die Gabel Catering & Events
Tel.: +49 6105 / 94314 0
E-Mail: info@die-gabel.com
Website: www.die-gabel.com

DIE HOFKÖCHE GmbH
Tel. : +49 611 / 45041 40
E-Mail: info@diehofkoeche.de
Website: www.diehofkoeche.de

Gollner's Private Dining GmbH
Tel.: +49 611 / 181180
E-Mail: info@gollners.de
Website: www.gollners.de

SL mehr buffet
Tel.: +49 6135 / 70350
E-Mail: info@sl-mehr-buffet.de
Internet: www.sl-mehr-buffet.de

Hofmann GmbH
Partyservice mit eigenem Fleischerfachgeschäft
Tel.: +49 611 / 890 775 17
E-Mail: info@partyservice-hofmann.de
Internet: www.partyservice-hofmann.de

Hostellerie Landhaus Diedert
Tel.: +49 611 / 184 660 0
E-Mail: info@landhaus-diedert.de
Internet: www.landhaus-diedert.de

HYATT REGENCY MAINZ
Tel.: +49 6131 / 731 1720
E-Mail: mainz-rfp@hyatt.com
Internet: hyattregencymainz.com

BENNER's Bistronomie & Catering
Tel.: +49 611 / 536 200
E-Mail: genuss@benner-s.de
Internet: www.benner-s.de

Restaurant Hubertushütte
Tel.: +49 611 / 542410
Mobil: +49 178 / 5447140
E-Mail: info@hubertushuette-wiesbaden.de
Internet: www.hubertushuette-wiesbaden.de



DIE HOFKÖCHE - SAMPLE CALCULATION

| Conference with buffet | Conference with buffet and get-together | Evening event with gala dinner |
|-----------------------------------------------------------------------------------------------------------------------------------------------------------------------------------------------------------------------------------------------------------------------------------------------------------------------------------------------------------------------------------|---------------------------------------------------------------------------------------------------------------------------------------------------------------------------------------------------------------------------------------------------------------------------------------------------------------------------------------------------------------------------------------------------------------------------------------------|------------------------------------------------------------------------------------------------------------------------------------------------------------------------------------------------------------------------------------------------------------------------------------------------------------------------------------------------------------------------------------------------------------------------------------|
| <p>The following services are included in the price per person from 10.00 a.m. to 6.00 p.m:</p> <ul style="list-style-type: none"> 2 coffee breaks Lunch buffet Beverage package (water, soft drinks, coffee) Equipment Seating Kitchen equipment Glasses and crockery Staff Set-up and dismantling | <p>The following services are included in the price per person from 10.00 a.m. to 10.00 p.m:</p> <ul style="list-style-type: none"> 2 coffee breaks Lunch buffet Get-together buffet Beverage package (water, soft drinks, coffee, beer, wine, sparkling wine) Equipment Seating Kitchen equipment Glasses and crockery Staff Set-up and dismantling | <p>The following services are included in the above price per person from 7.00 pm to 2.00 am:</p> <ul style="list-style-type: none"> Food for the reception 3-course menu Drinks package (water, soft drinks, coffee, beer, wine, sparkling wine, long drinks) Equipment Seating Kitchen equipment Glasses and crockery Staff Set-up and dismantling |
| from approx. EUR 100.00 plus VAT per person | from approx. EUR 145.00 plus VAT per person | from approx. EUR 164.00 plus VAT per person |

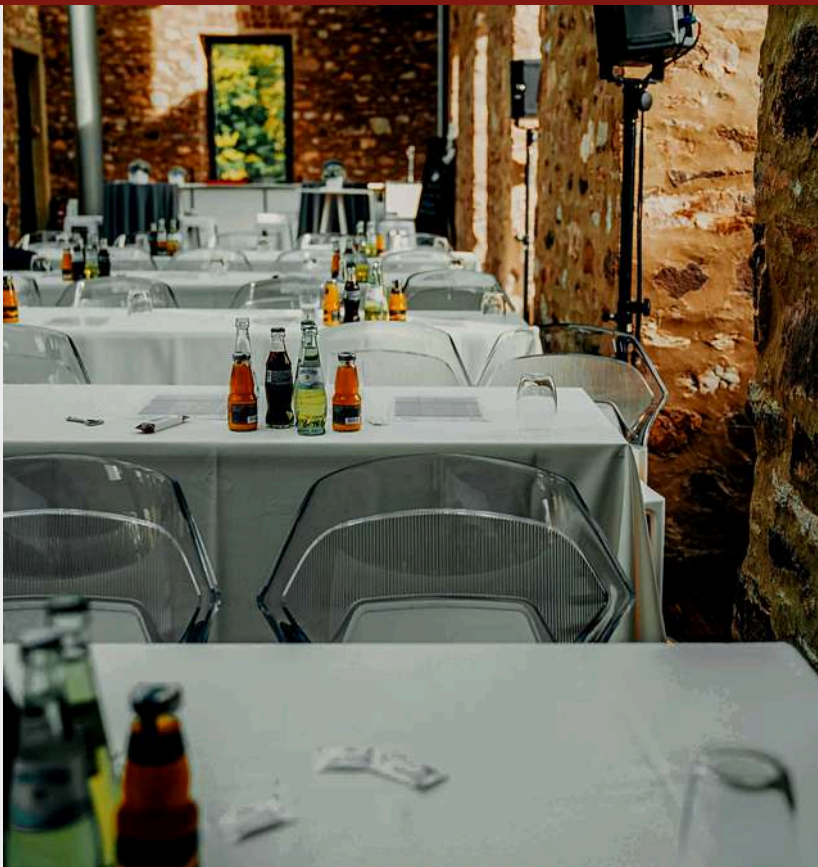
DIE GABEL – SAMPLE CALCULATION

Conference with get-together

The following services are included in the price per person from 1 p.m. to 1 a.m:

- 1 coffee break in the afternoon
- Beverage package (water, soft drinks, coffee, beer, wine, sparkling wine, long drinks)
- Food for the reception
- Buffet in the evening
- Equipment Seating
- Kitchen equipment
- Glasses and crockery
- Staff
- Set-up and dismantling

from approx. EUR 132.00 plus VAT per person



You are not bound to exclusive service providers at Jagdschloss Platte as a matter of principle. Please contact us for alternative recommendations or for bringing your desired service partner.

OUR EVENT DECORATORS

[blickfang] Event Design GmbH

Tel. : +49 6131 / 333140

E-Mail: info@blickfang-eventdesign.de

Internet: www.blickfang-eventdesign.de

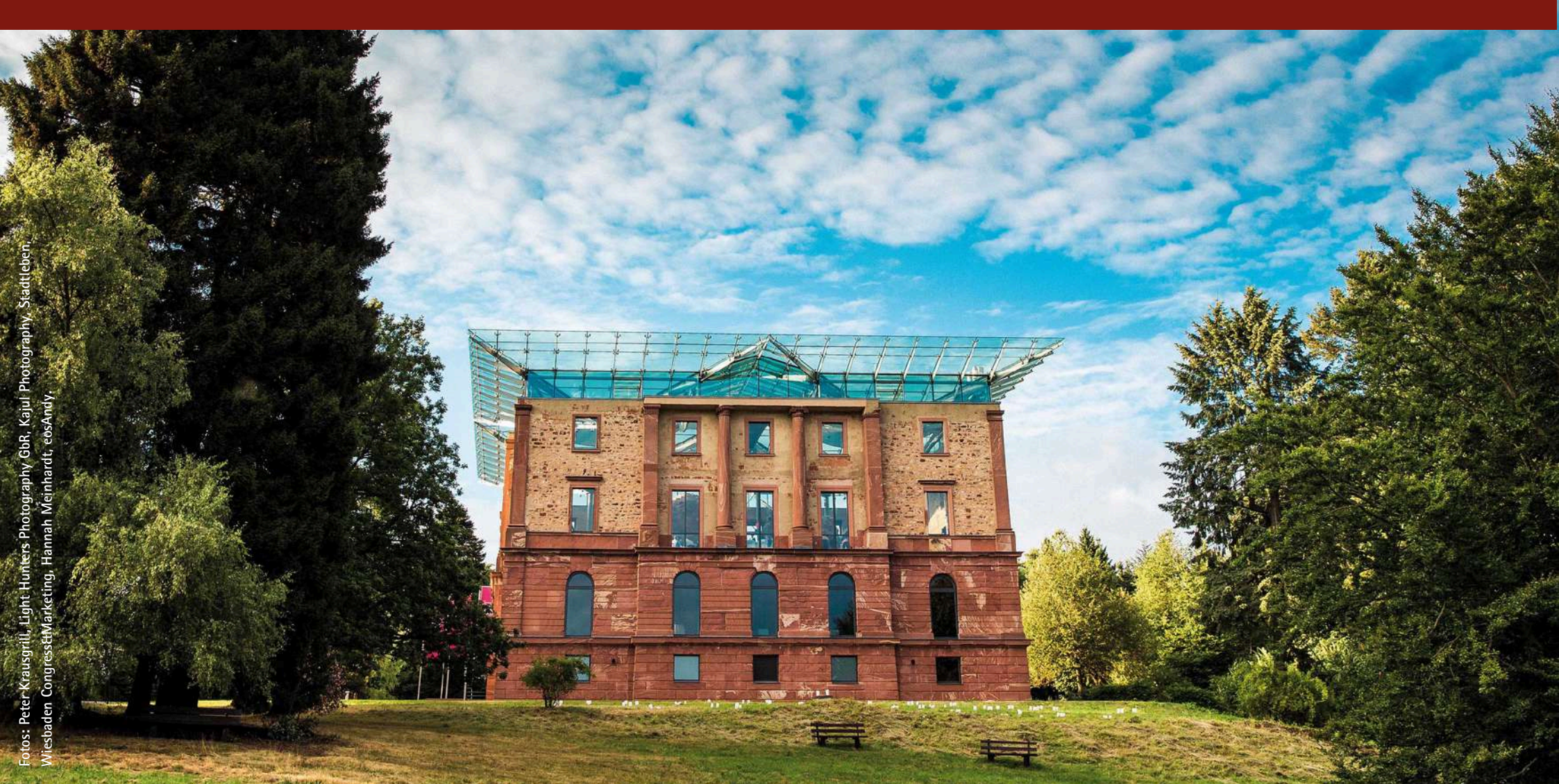
Flairville – kreative Dekorationen

Tel.: +49 176 / 725 41 697

E-Mail: nadine@flairville.de

Internet: www.flairville.de





Fotos: Peter-Krausgrill, Light-Hunters Photography GbR, Kajul Photography, Stadtleben,
Wiesbaden Congress&Marketing, Hannah Meinhardt, eosAndy.

Address

Jagdschloss Platte
Auf der Platte / An der B417
65195 Wiesbaden

Wiesbaden Congress & Marketing GmbH

Project Office Jagdschloss Platte
Kurhausplatz 1
65189 Wiesbaden

Contact

Tel.: +49 611 1729-291
E-Mail: jagdschloss-platte@wicm.de
Internet: www.jagdschloss.wiesbaden.de