

WIESBADEN  
Wiesbaden Congress &  
Marketing GmbH



# JAGDSCHLOSS PLATTE

EXCLUSIVE - INDIVIDUAL - VERSATILE



# EVENT LOCATION IN THE GREENERY

ABOVE THE ROOFTOPS OF WIESBADEN



On the Taunus hillside called "Platte" lies the Jagdschloss Platte, one of the most beautiful historic locations in the region. The Platte, the 500-metre-high peak of the Wiesbaden Hochtaunus area is the ideal location for those seeking relaxation, hikers, cyclists and for tobogganists and skiers in winter. The city centre of the Hessian capital is just a few minutes away by car. Up to 400 free parking spaces are available to the public.

# SETTING FOR THE SOCIAL SCENE

SINCE 1826

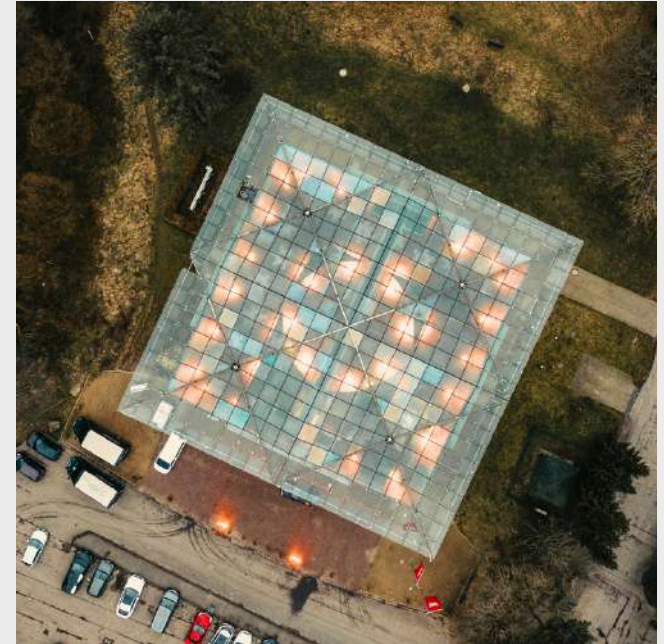
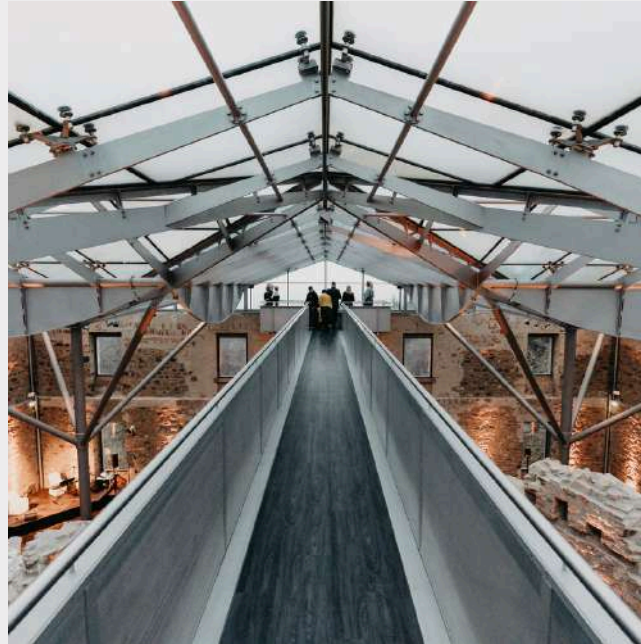


The afforested hills above Wiesbaden with their unobstructed view of the Rhine Valley were already the royal hunting ground and preferred abode of sovereigns and rulers as far back as the 18th century. Jagdschloss Platte was built on behalf of Duke Willhelm of Nassau in the 19th century. The magnitude of the hunting ground and stately architecture soon meant the castle was the setting for the social scene.



# HISTORIC CASTLE RUIN

WITH MODERN INTERPRETATION



The building was completely destroyed during an air raid at the end of the Second World War. It was restored and modernized in compliance with the preservation of historic buildings and monuments. The historic character of the ruin was preserved and enhanced with new, modern elements such as a glass roof and a viewing platform with a view stretching up to 85 km away.

The combination of preserved architecture and new elements underline the unique character of Jagdschloss Platte.





# EXCLUSIVE ATMOSPHERE

WITH PLENTY OF SCOPE FOR CREATIVE DESIGN

Ground floor and upper floor provide a total of 660m<sup>2</sup> of space for events with up to 600 persons. The ground floor with 280m<sup>2</sup> of event space is particularly suitable as a lounge and party area as well as for receptions or an alternative wedding ceremony.

Up to 300 banquet guests can be accommodated on some 380m<sup>2</sup> of event space on the upper floor.



# SPECIAL LOCATION

WITH A VIEW OF THE ENTIRE CITY



**Jagdschloss Platte**

**An der B417**

**65195 Wiesbaden**

## **Arriving by car**

Just ten minutes by car from Wiesbaden city centre, Jagdschloss Platte is located on the B417 road in the direction of Limburg/Taunusstein. The Platter Straße heading out of town joins the B417 directly after the "Wiesbaden" exit sign. The B417 leads directly to Jagdschloss Platte after approx. three kilometres. There is a sign on the right at the top of the hill, just before the exit. Sufficient parking spaces (free) are signposted in front of Jagdschloss Platte.

## **Arriving by public transport**

The 270 and 271 buses depart hourly every day.

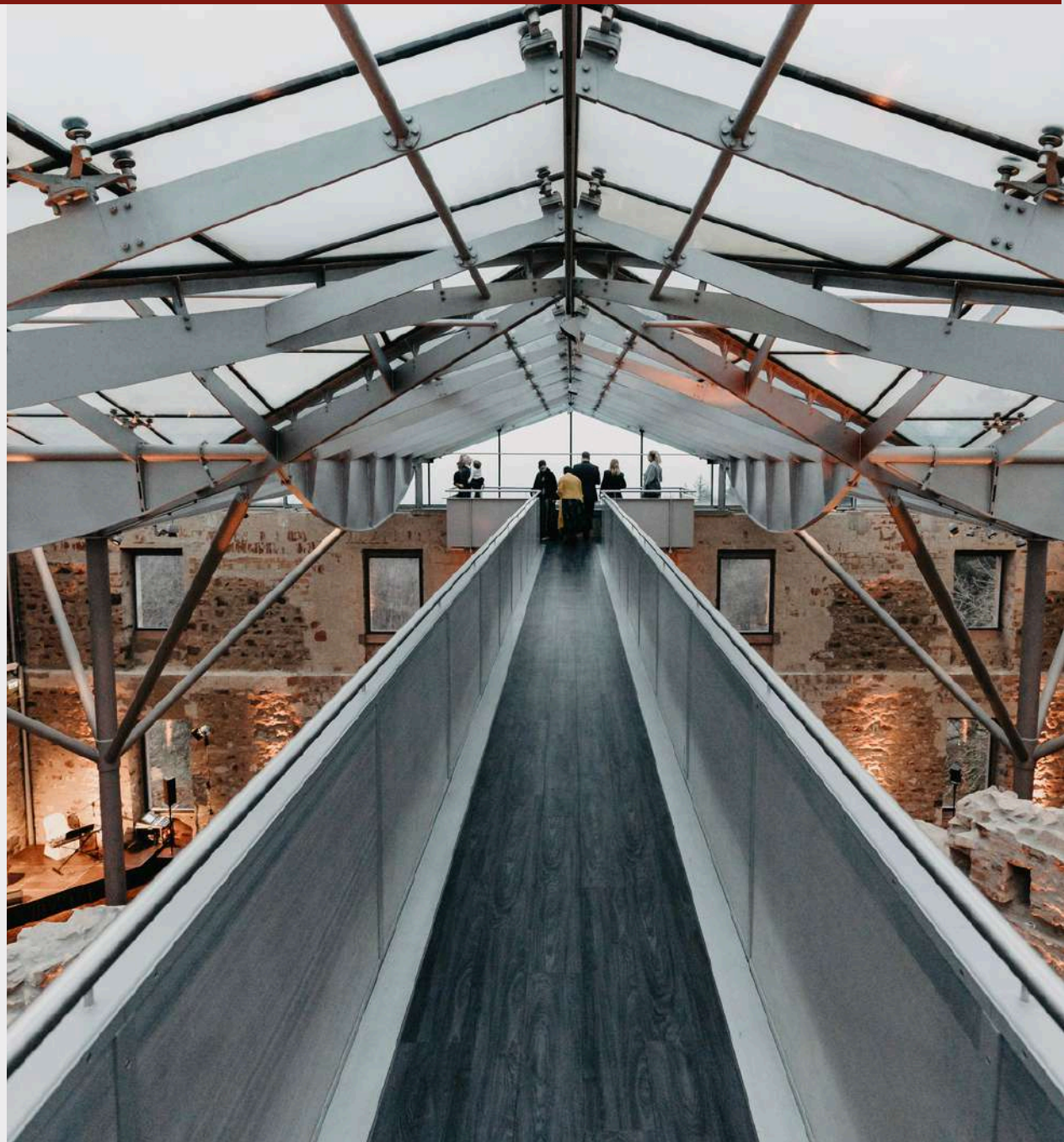




# GLASS ROOF

WITH A VIEWING PLATFORM

Part of the special appeal of the upper floor is the visual opening of the room with a glass roof as well as the view of the densely forested surroundings from the large windows and viewing platform.





# OUTDOOR AREA

FOR A RECEPTION OR AN ALTERNATIVE WEDDING CEREMONY



Greet your guests with a refreshing drink and a heartfelt welcome speech. The green area behind the building is suitable for a summer reception or an alternative wedding in the warm months in particular.





# EXCLUSIVITY

## FOR YOUR EVENT

Whether for a wedding party or other private events: the castle is exclusively yours. No parallel events will take place. This means that your event and your guests are centre stage.

The regular rental period incl. set-up and de-rig is from 08:00 to 06:00 on the morning of the next day. The end of the event is thus scheduled for 03:00. Adjustments can be agreed in advance.





Let your imagination run wild. The building is already impressive without any decoration. With just a few features or lighting elements, you can give the castle a personal touch.

# CREATIVE FREEDOM

FOR EVERY EVENT





# SUPPORT, ADVICE AND SERVICE

## CONDITIONS



- Max. number of guests
- Recommended number of guests
- Rent per day incl. final cleaning
- Security staff\*
- Standard electricity & light
- Heating and ventilation
- WLAN

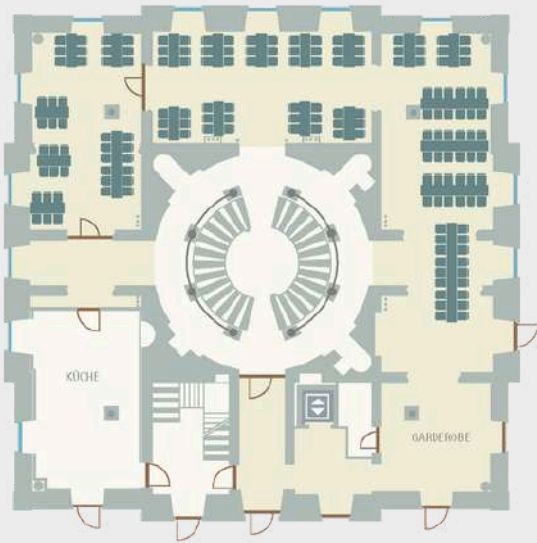
up to 600 guests  
50 – 200 guests  
2.875,-€ Euro plus VAT.  
312,-€ Euro plus VAT.  
inclusive  
inclusive  
on request

\*A security specialist must be appointed by Jagdschloss Platte to supervise your party. If the number of guests exceeds 200, two security specialists are required. The period is usually set at 10 p.m. to 6 a.m. (end of dismantling).

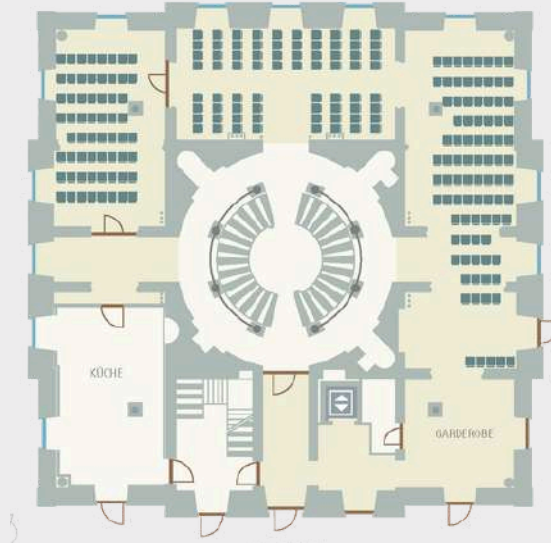


# VERSATILE USE OF THE PREMISES

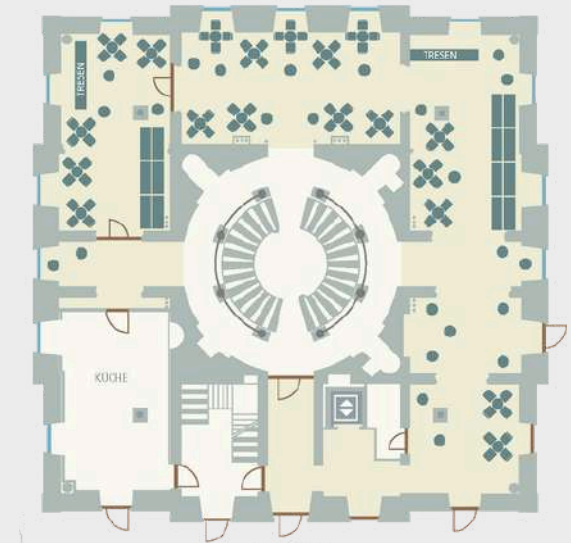
INDIVIDUAL DESIGN ON THE GROUND FLOOR



Seating with square tables



Row seating

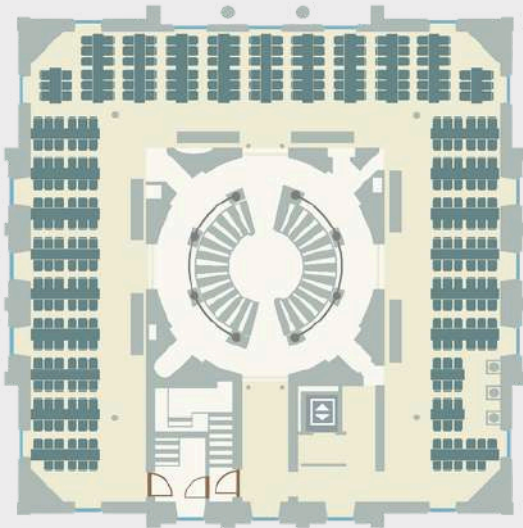


Mixed standing and seated seating

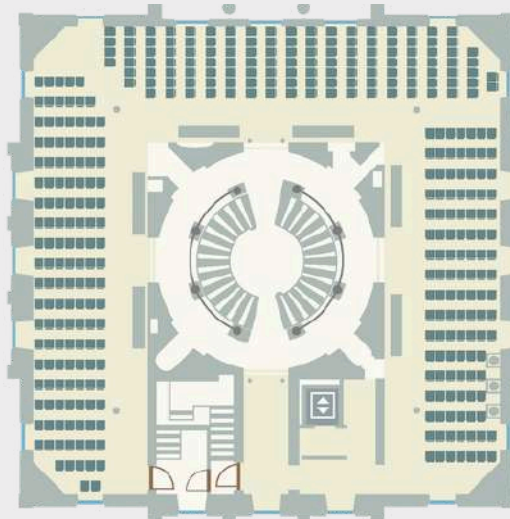


# VERSATILE USE OF THE PREMISES

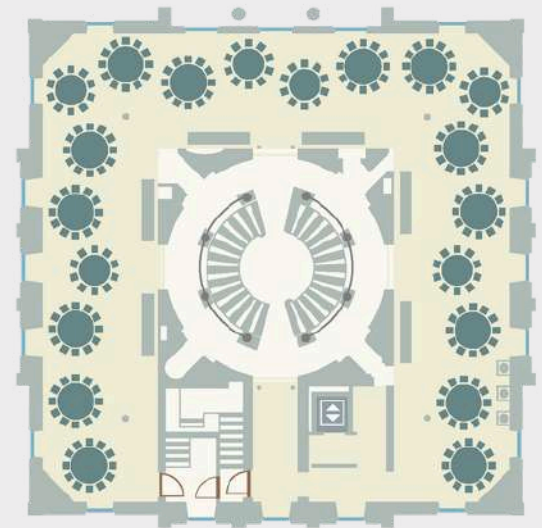
INDIVIDUAL DESIGN ON THE FIRST FLOOR



Seating with square tables



Row seating



Round table seating



# OUR CATERING PARTNERS

The caterers listed here have concluded a basic agreement with Jagdschloss Platte and are familiar with the conditions on site. Caterers that are not listed are also permitted after conclusion of a one-day basic agreement with relevant commission clause.



**Consortium Gastronomie GmbH**  
Tel.: +49 611 / 17437 30  
E-Mail: [diekoeche@consortium.de](mailto:diekoeche@consortium.de)  
Website: [www.consortium-gastronomie.de](http://www.consortium-gastronomie.de)

**Die Gabel Catering & Events**  
Tel.: +49 6105 / 94314 0  
E-Mail: [info@die-gabel.com](mailto:info@die-gabel.com)  
Website: [www.die-gabel.com](http://www.die-gabel.com)

**DIE HOFKÖCHE GmbH**  
Tel. : +49 611 / 45041 40  
E-Mail: [info@diehofkoeche.de](mailto:info@diehofkoeche.de)  
Website: [www.diehofkoeche.de](http://www.diehofkoeche.de)

**Gollner's Private Dining GmbH**  
Tel.: +49 611 / 181180  
E-Mail: [info@gollners.de](mailto:info@gollners.de)  
Website: [www.gollners.de](http://www.gollners.de)

**SL mehr buffet**  
Tel.: +49 6135 / 70350  
E-Mail: [info@sl-mehr-buffet.de](mailto:info@sl-mehr-buffet.de)  
Internet: [www.sl-mehr-buffet.de](http://www.sl-mehr-buffet.de)

**Hofmann GmbH**  
**Partyservice mit eigenem Fleischerfachgeschäft**  
Tel.: +49 611 / 890 775 17  
E-Mail: [info@partyservice-hofmann.de](mailto:info@partyservice-hofmann.de)  
Internet: [www.partyservice-hofmann.de](http://www.partyservice-hofmann.de)

**Hostellerie Landhaus Diedert**  
Tel.: +49 611 / 184 660 0  
E-Mail: [info@landhaus-diedert.de](mailto:info@landhaus-diedert.de)  
Internet: [www.landhaus-diedert.de](http://www.landhaus-diedert.de)

**HYATT REGENCY MAINZ**  
Tel.: +49 6131 / 731 1720  
E-Mail: [mainz-rfp@hyatt.com](mailto:mainz-rfp@hyatt.com)  
Internet: [hyattregencymainz.com](http://hyattregencymainz.com)

**BENNER's Bistronomie & Catering**  
Tel.: +49 611 / 536 200  
E-Mail: [genuss@benner-s.de](mailto:genuss@benner-s.de)  
Internet: [www.benner-s.de](http://www.benner-s.de)

**Restaurant Hubertushütte**  
Tel.: +49 611 / 542410  
Mobil: +49 178 / 5447140  
E-Mail: [info@hubertushuette-wiesbaden.de](mailto:info@hubertushuette-wiesbaden.de)  
Internet: [www.hubertushuette-wiesbaden.de](http://www.hubertushuette-wiesbaden.de)





# SAMPLE CALCULATION WITH BUFFET

Catering Partner	Price per person	Services
Die Hofköche / Die Gabel	from 155€ - 215€ plus VAT.	<p>The following services are included in the above price per person from 4 p.m. to 3 a.m:</p> <ul style="list-style-type: none"><li>• Food for the reception</li><li>• Buffet</li><li>• Midnight snack</li><li>• Drinks package (sparkling wine, beer, wine, soft drinks, long drinks, coffee)</li><li>• Equipment Seating</li><li>• Kitchen equipment</li><li>• Glasses and crockery</li><li>• Staff</li><li>• Set-up and dismantling</li></ul> <p>Additional services such as menu cards, covers for banquet chairs, pavilion tent, parasol etc. on request.</p>



# SAMPLE CALCULATION WITH MENU

Catering Partner	Price per person	Services
Die Hofköche / Die Gabel	ab 160€ - 224€ zzgl. MwSt.	<p>The following services are included in the above price per person from 4 p.m. to 3 a.m:</p> <ul style="list-style-type: none"><li>• Food for the reception</li><li>• 3-course menu</li><li>• Midnight snack</li><li>• Drinks package (sparkling wine, beer, wine, soft drinks, long drinks, coffee)</li><li>• Equipment Seating</li><li>• Kitchen equipment</li><li>• Glasses and crockery</li><li>• Staff</li><li>• Set-up and dismantling</li></ul> <p>Additional services such as menu cards, covers for banquet chairs, pavilion tent, parasol etc. on request.</p>



You are not bound to exclusive service providers at Jagdschloss Platte as a matter of principle. Please contact us for alternative recommendations or for bringing your desired service partner.

# OUR EVENT DECORATORS

**[blickfang] Event Design GmbH**

Tel. : +49 6131 / 333140

E-Mail: [info@blickfang-eventdesign.de](mailto:info@blickfang-eventdesign.de)

Internet: [www.blickfang-eventdesign.de](http://www.blickfang-eventdesign.de)

**Flairville – kreative Dekorationen**

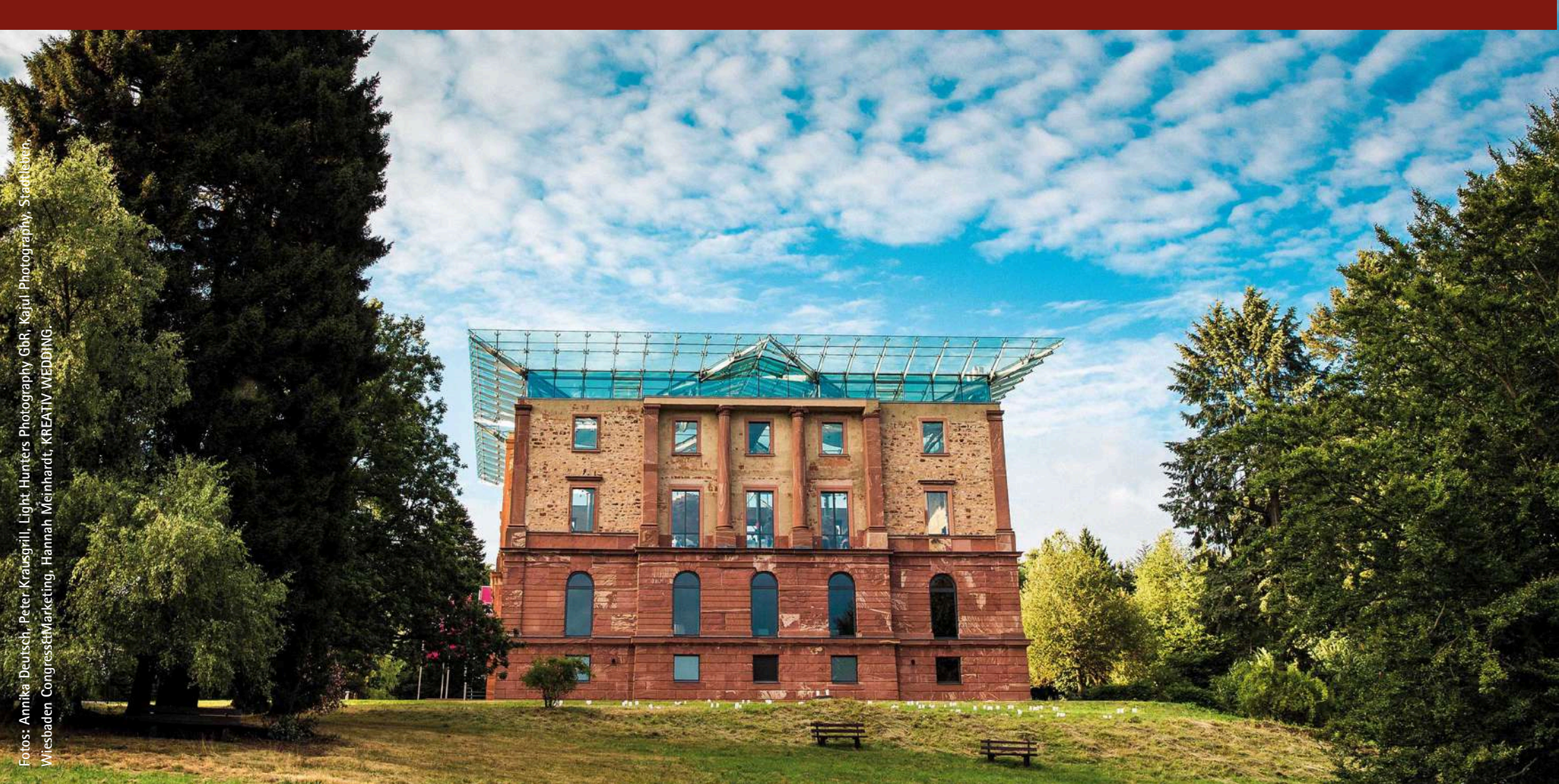
Tel.: +49 176 / 725 41 697

E-Mail: [nadine@flairville.de](mailto:nadine@flairville.de)

Internet: [www.flairville.de](http://www.flairville.de)







Fotos: Annika Deutsch, Peter Krausgrill, Light Hunters Photography GbR, Kajul Photography, Stadtleben, Wiesbaden Congress & Marketing, Hannah Meinhardt, KREATIV WEDDING.

### **Address**

Jagdschloss Platte  
Auf der Platte / An der B417  
65195 Wiesbaden

### **Wiesbaden Congress & Marketing GmbH**

Project Office Jagdschloss Platte  
Kurhausplatz 1  
65189 Wiesbaden

### **Contact**

Tel.: +49 611 1729-291  
E-Mail: [jagdschloss-platte@wicm.de](mailto:jagdschloss-platte@wicm.de)  
Internet: [www.jagdschloss.wiesbaden.de](http://www.jagdschloss.wiesbaden.de)